

# FOR SALE

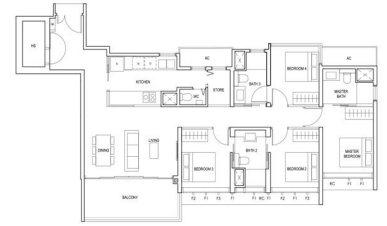
## RESIDENTIAL - CONDOMINIUM 1,389SQFT (129SQM) / CALL FOR PRICE!

+65 9457 2776



4 - Bedroom

TYPE (4)a  
129sqm | 1389sqft  
MCD-03 TO #15-03  
MCD-12 TO #15-12



Scale 1:100

North

Legend

Notes

1. All dimensions are approximate.

2. Refer to the site plan for location.

3. Refer to the architectural drawings for details.

4. Refer to the sales brochure for more information.

5. Refer to the contract documents for terms and conditions.

6. Refer to the site plan for location.

7. Refer to the architectural drawings for details.

8. Refer to the sales brochure for more information.

9. Refer to the contract documents for terms and conditions.

10. Refer to the site plan for location.

11. Refer to the architectural drawings for details.

12. Refer to the sales brochure for more information.

13. Refer to the contract documents for terms and conditions.

14. Refer to the site plan for location.

15. Refer to the architectural drawings for details.

16. Refer to the sales brochure for more information.

17. Refer to the contract documents for terms and conditions.

18. Refer to the site plan for location.

19. Refer to the architectural drawings for details.

20. Refer to the sales brochure for more information.

21. Refer to the contract documents for terms and conditions.

22. Refer to the site plan for location.

23. Refer to the architectural drawings for details.

24. Refer to the sales brochure for more information.

25. Refer to the contract documents for terms and conditions.

26. Refer to the site plan for location.

27. Refer to the architectural drawings for details.

28. Refer to the sales brochure for more information.

29. Refer to the contract documents for terms and conditions.

30. Refer to the site plan for location.

31. Refer to the architectural drawings for details.

32. Refer to the sales brochure for more information.

33. Refer to the contract documents for terms and conditions.

34. Refer to the site plan for location.

35. Refer to the architectural drawings for details.

36. Refer to the sales brochure for more information.

37. Refer to the contract documents for terms and conditions.

38. Refer to the site plan for location.

39. Refer to the architectural drawings for details.

40. Refer to the sales brochure for more information.

41. Refer to the contract documents for terms and conditions.

42. Refer to the site plan for location.

43. Refer to the architectural drawings for details.

44. Refer to the sales brochure for more information.

45. Refer to the contract documents for terms and conditions.

46. Refer to the site plan for location.

47. Refer to the architectural drawings for details.

48. Refer to the sales brochure for more information.

49. Refer to the contract documents for terms and conditions.

50. Refer to the site plan for location.

51. Refer to the architectural drawings for details.

52. Refer to the sales brochure for more information.

53. Refer to the contract documents for terms and conditions.

54. Refer to the site plan for location.

55. Refer to the architectural drawings for details.

### RESIDENTIAL - CONDOMINIUM

SIMS DRIVE, EUNOS, GEYLANG, PAYA LEBAR,  
SINGAPORE 387395

- LISTING ID: SGLD42521918
- TENURE: LEASEHOLD 99
- TITLE: N/A
- SIZE BUILT-UP: 1,389SQFT (129SQM)
- SIZE LAND: 4.009AC (1.623HA)
- NO. OF FLOORS: 18
- FLOOR/LEVEL: N/A - N/A
- BED ROOMS: 4
- BATH ROOMS: 3
- MAIDS ROOMS: N/A
- PARKING SPACES: N/A
- LAYOUT TYPE: OTHER
- FACING: N/A
- VIEWING: OTHER
- SELLING PRICE: **CALL FOR PRICE!**
- COMPLETION YEAR: 2025
- CONDITION: ORIGINAL CONDITION
- FURNISHING: PARTIALLY FURNISHED
- LISTING DATE: APR 20, 2021

### PENROSE

Condominium for Sale: Partially furnished, 4 bedroom, 3 bathroom. Completed in 2025, this unit is in original condition. Tenure: Leasehold 99 Located in Singapore's district D14 near Eunos, Geylang, Paya Lebar in the area Eunos (Central region).

#### INTERIOR FACILITIES

- Balcony
- Bombshelter

#### OTHER INTERIOR FEATURES

- Audio System
- Cooker Hob/Hood
- Dryer
- Fridge

#### EXTERIOR FACILITIES

- 24 Hours Security
- Clubhouse
- Covered Car Park
- Game Room

VISIT THIS PROPERTY AT: <https://www.mkyproperty.com/property/SGLD42521918>

### MICHAEL MAH - HUTTONS ASIA PTE LTD

3 Bishan Place #05-01 CPF Bishan Building  
D20, 579838, Singapore

+65 9457 2776  
WhatsApp Me

michaelmahky@gmail.com

<https://www.mkyproperty.com>



Scan QR Code

**Huttons**® Call for Viewing  
The Agency of Choice +65-94572776